

Zoning Presentation

June 26, 2006



D.C. Major League Baseball Park

ZONING COMMISSION
District of Columbia
CASE NO.06-22
EXHIBIT NO.55A1

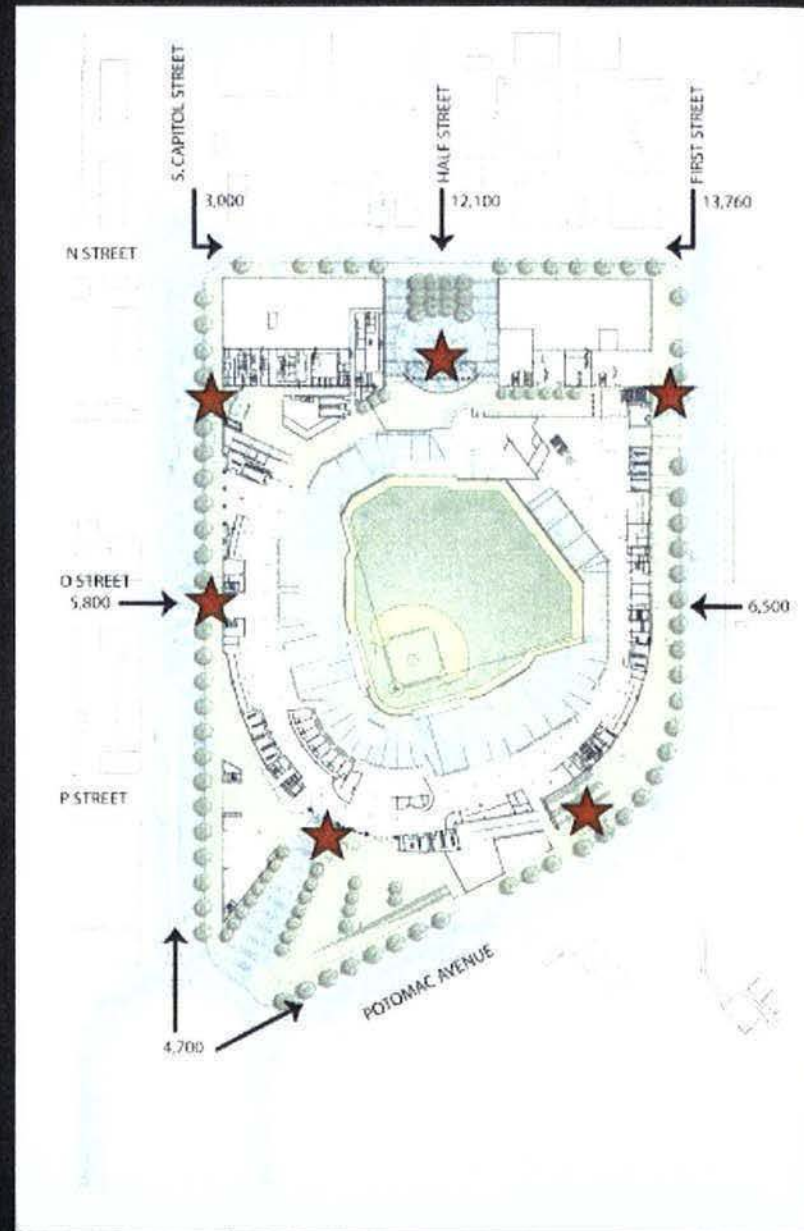


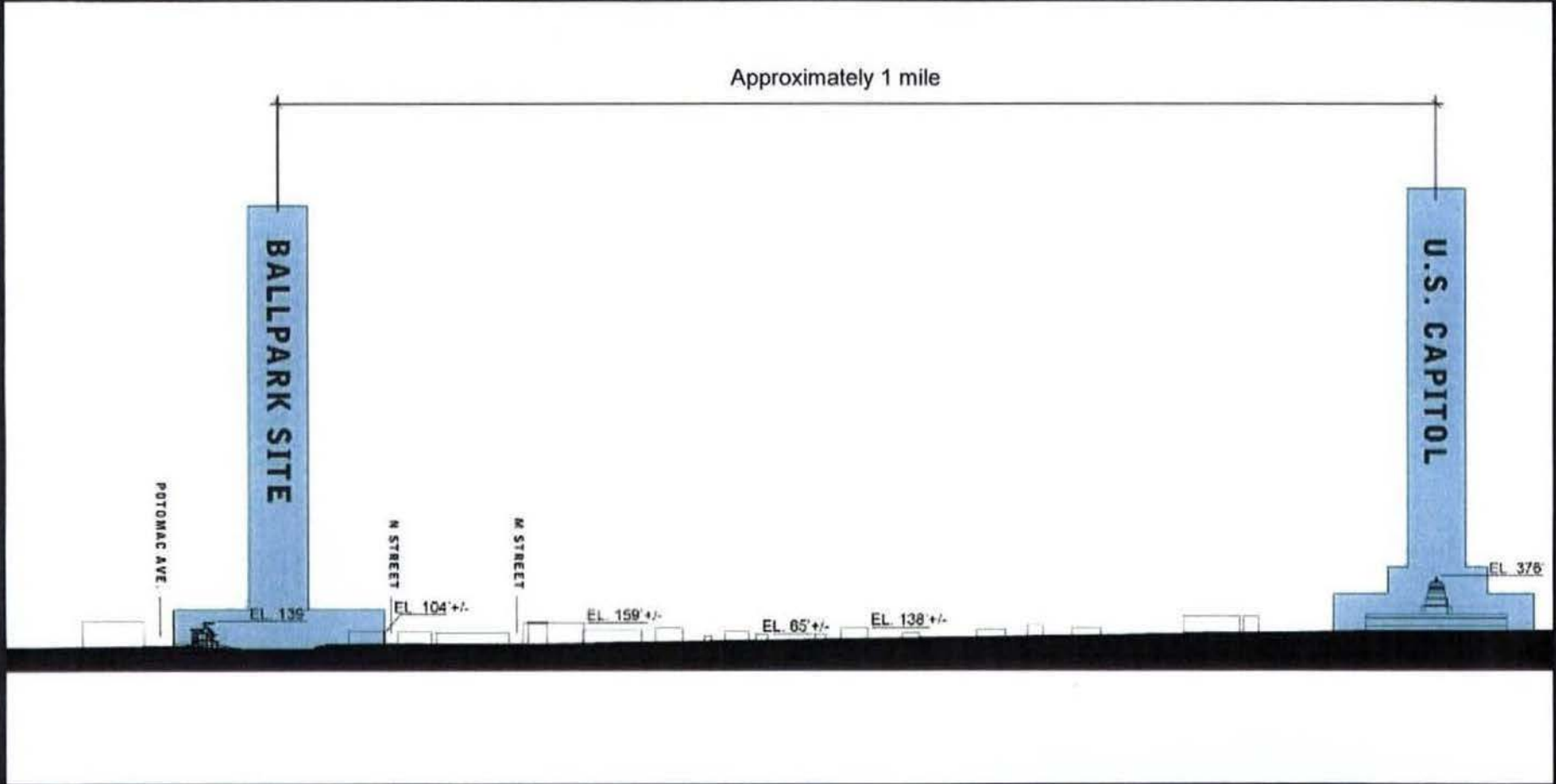
Google



AERIAL PHOTOGRAPH
D.C. Major League Baseball Park

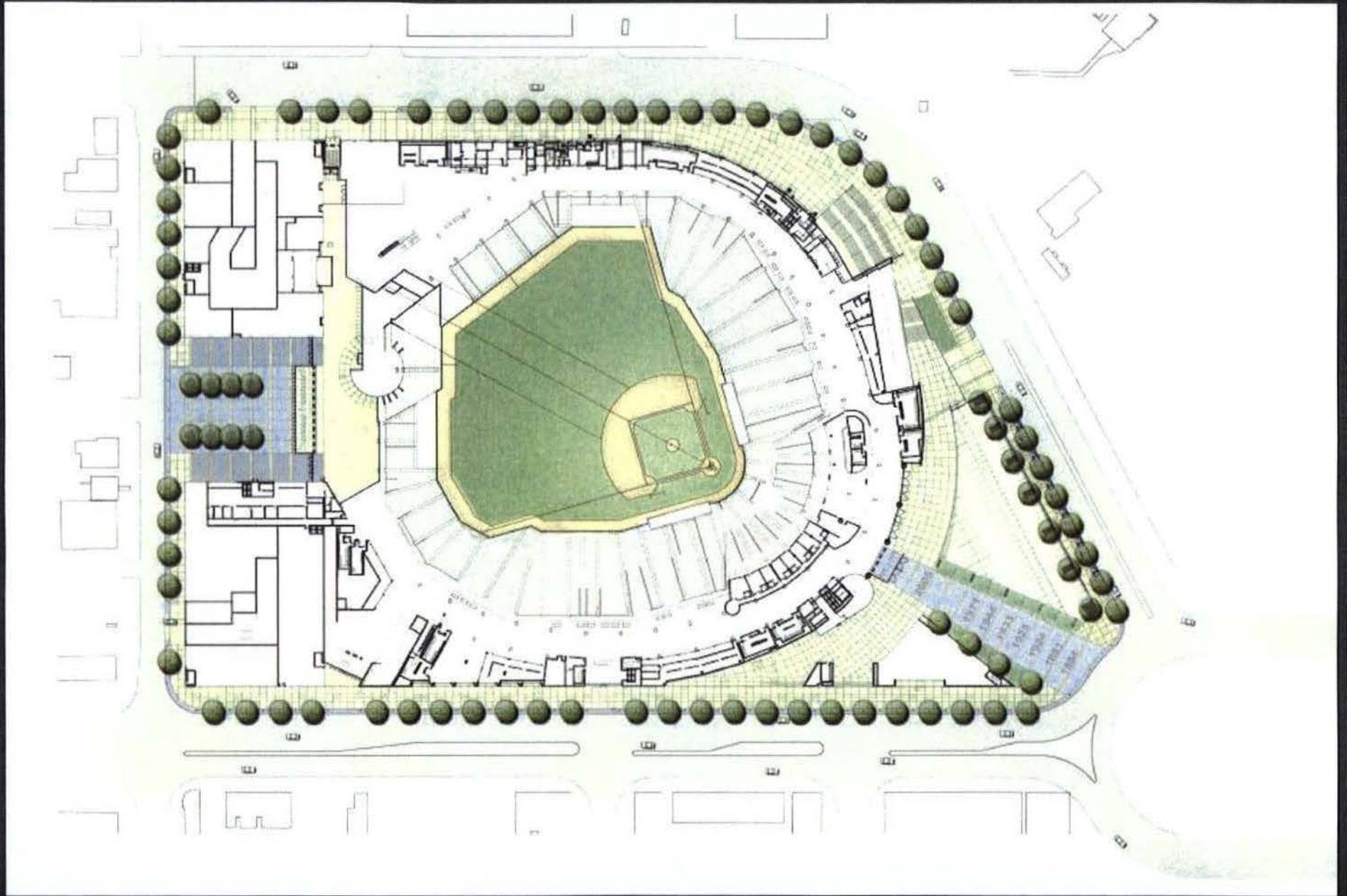






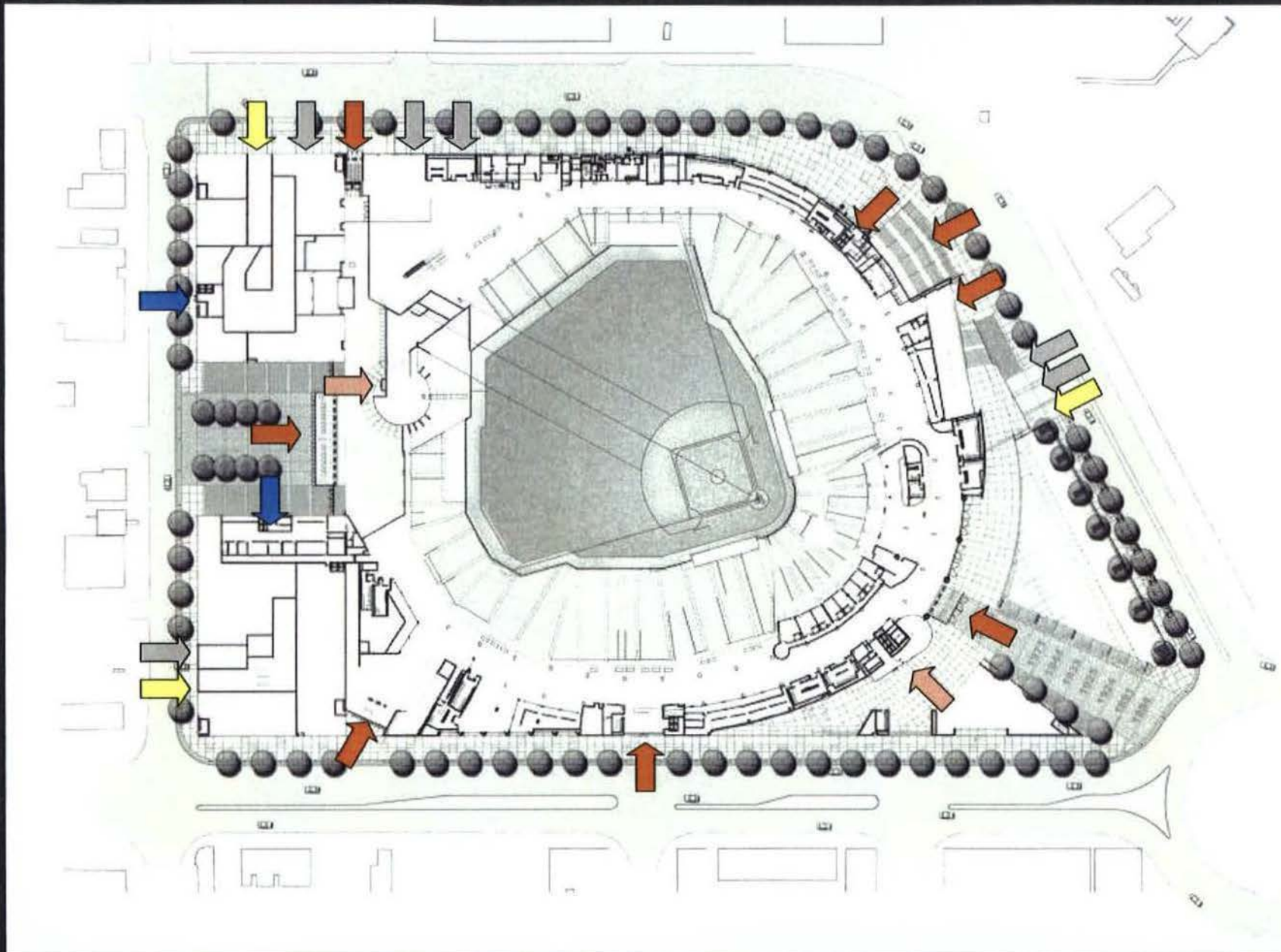
OVERALL SITE SECTION
D.C. Major League Baseball Park





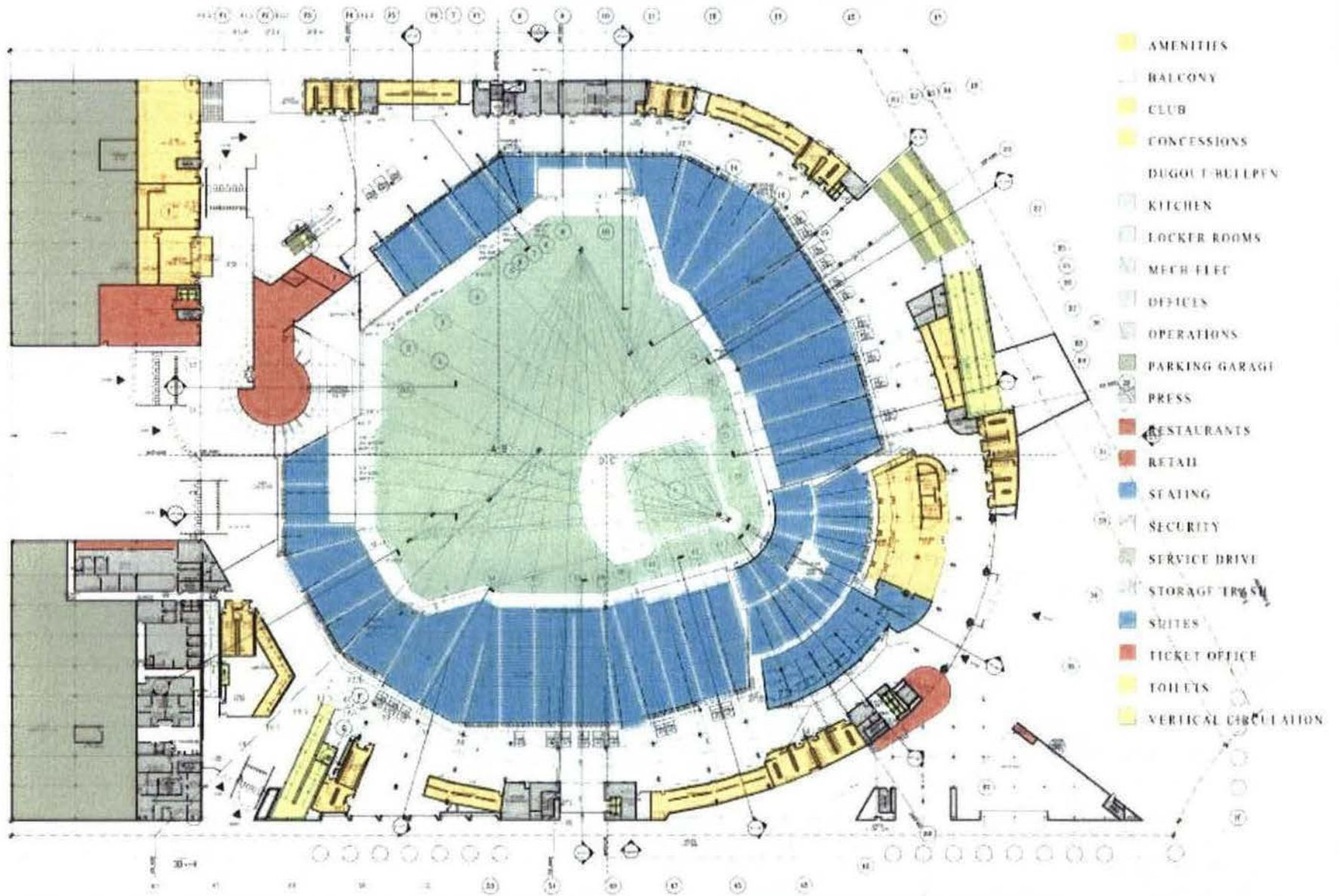
ILLUSTRATIVE SITE PLAN
D.C. Major League Baseball Park

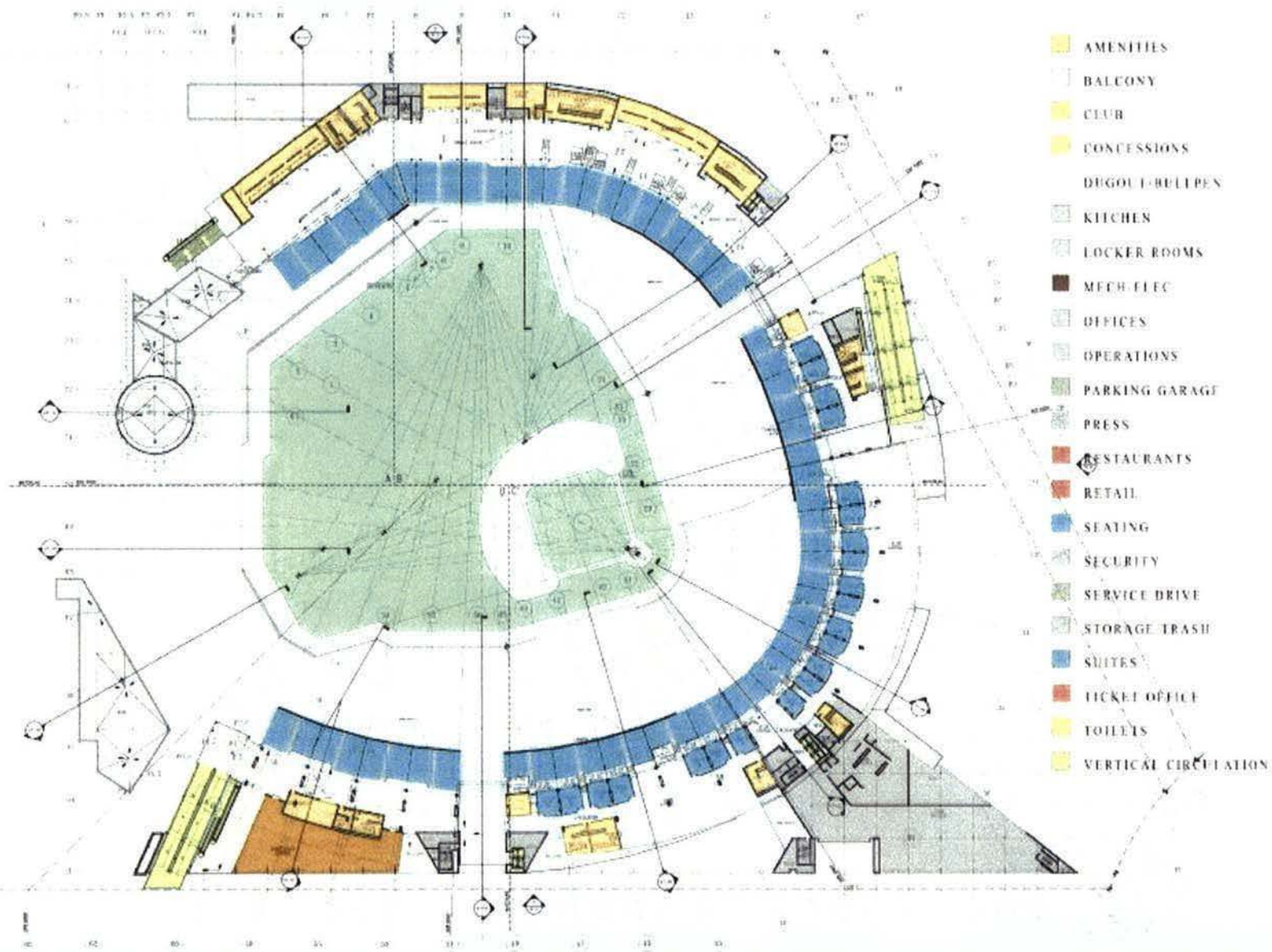


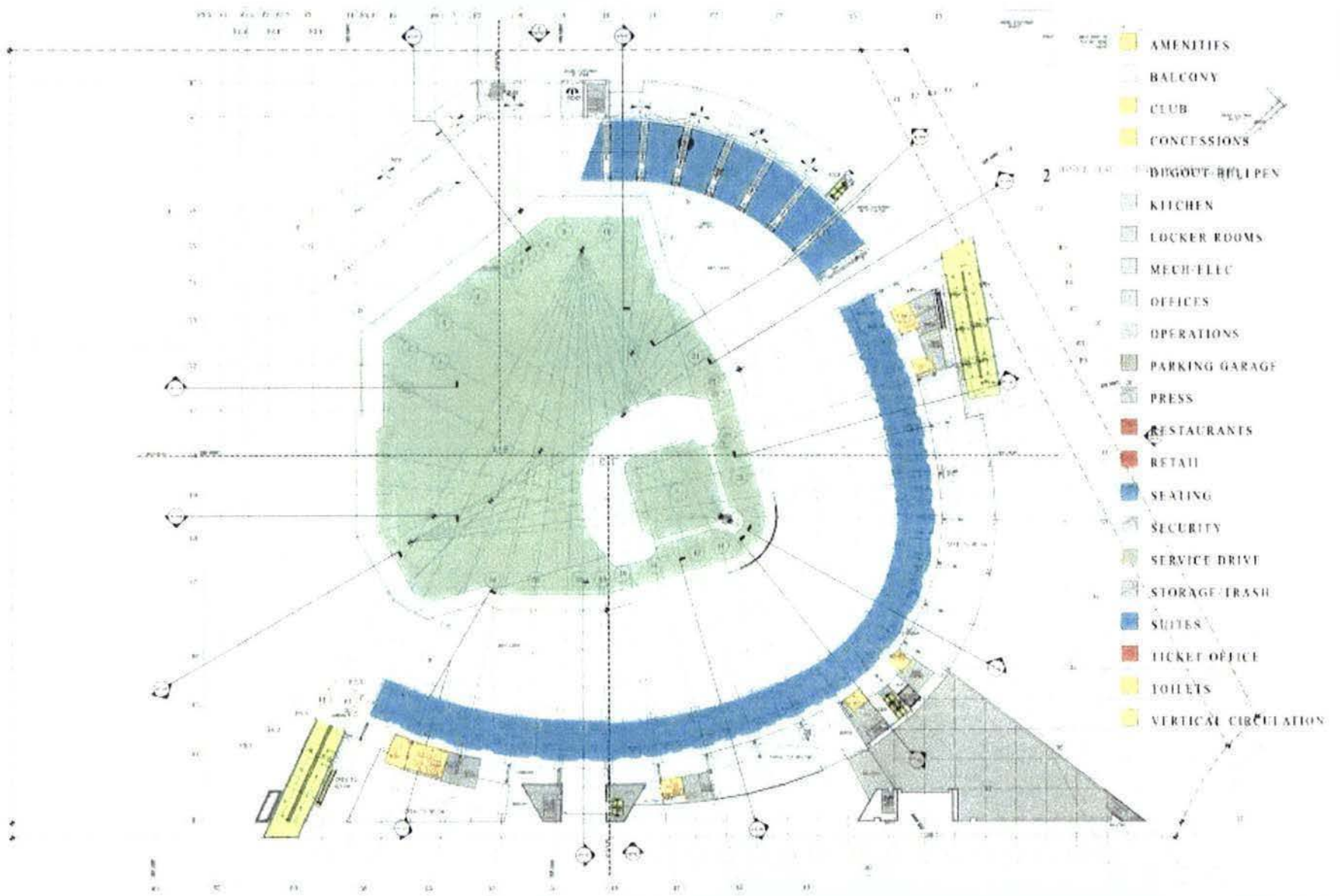


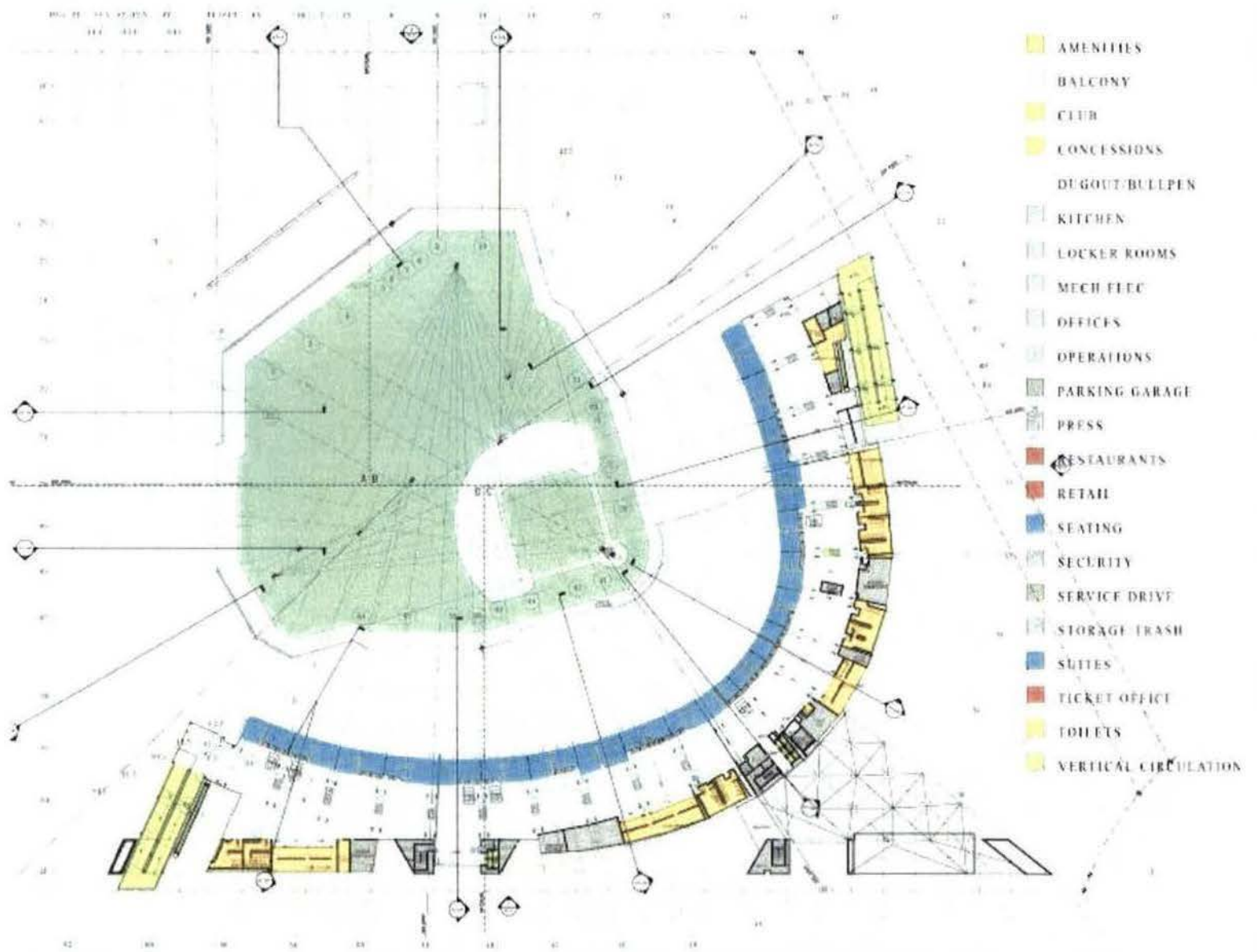
ILLUSTRATIVE SITE PLAN
D.C. Major League Baseball Park

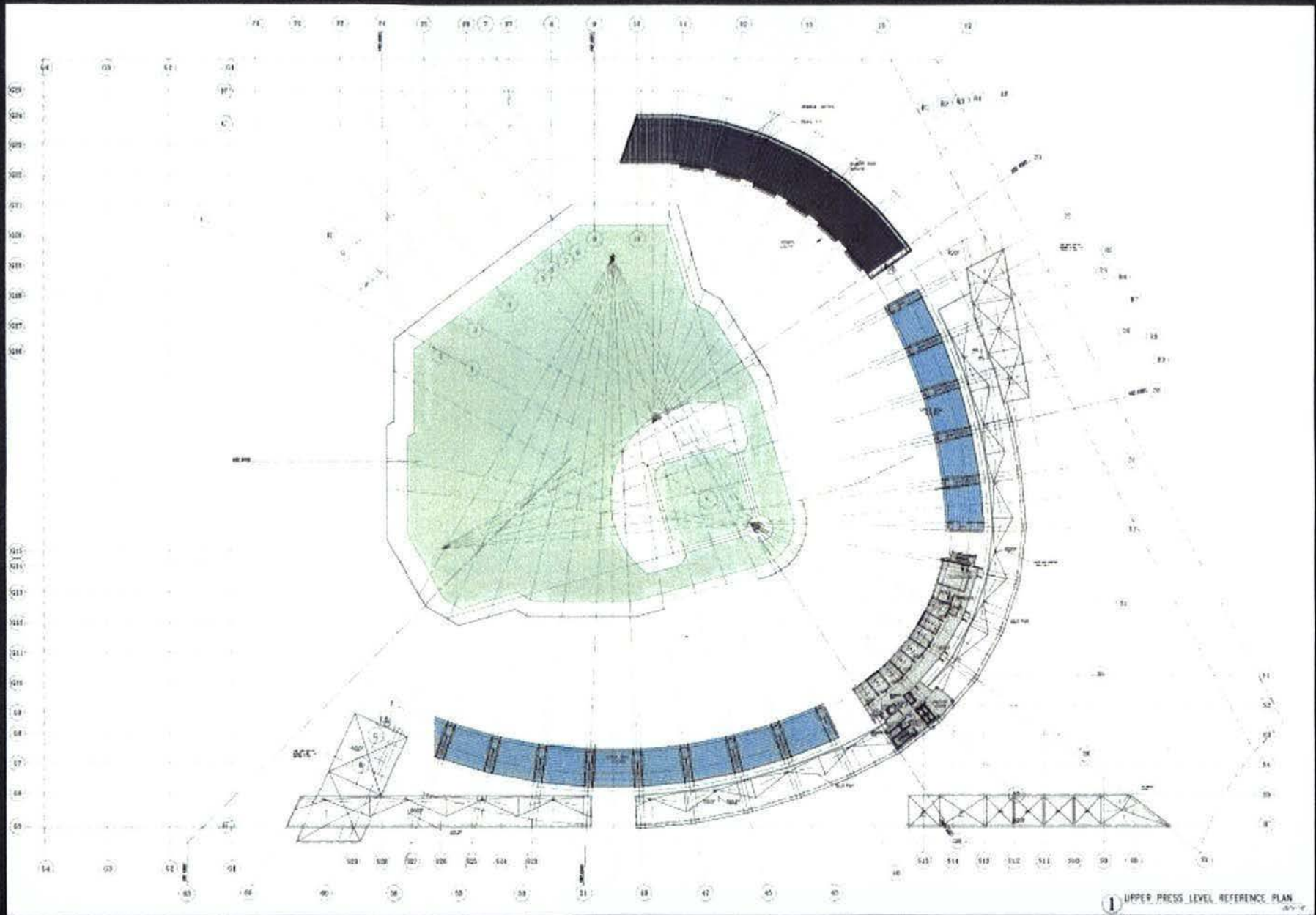












UPPER SEATING / UPPER PRESS LEVEL PLAN
D.C. Major League Baseball Park





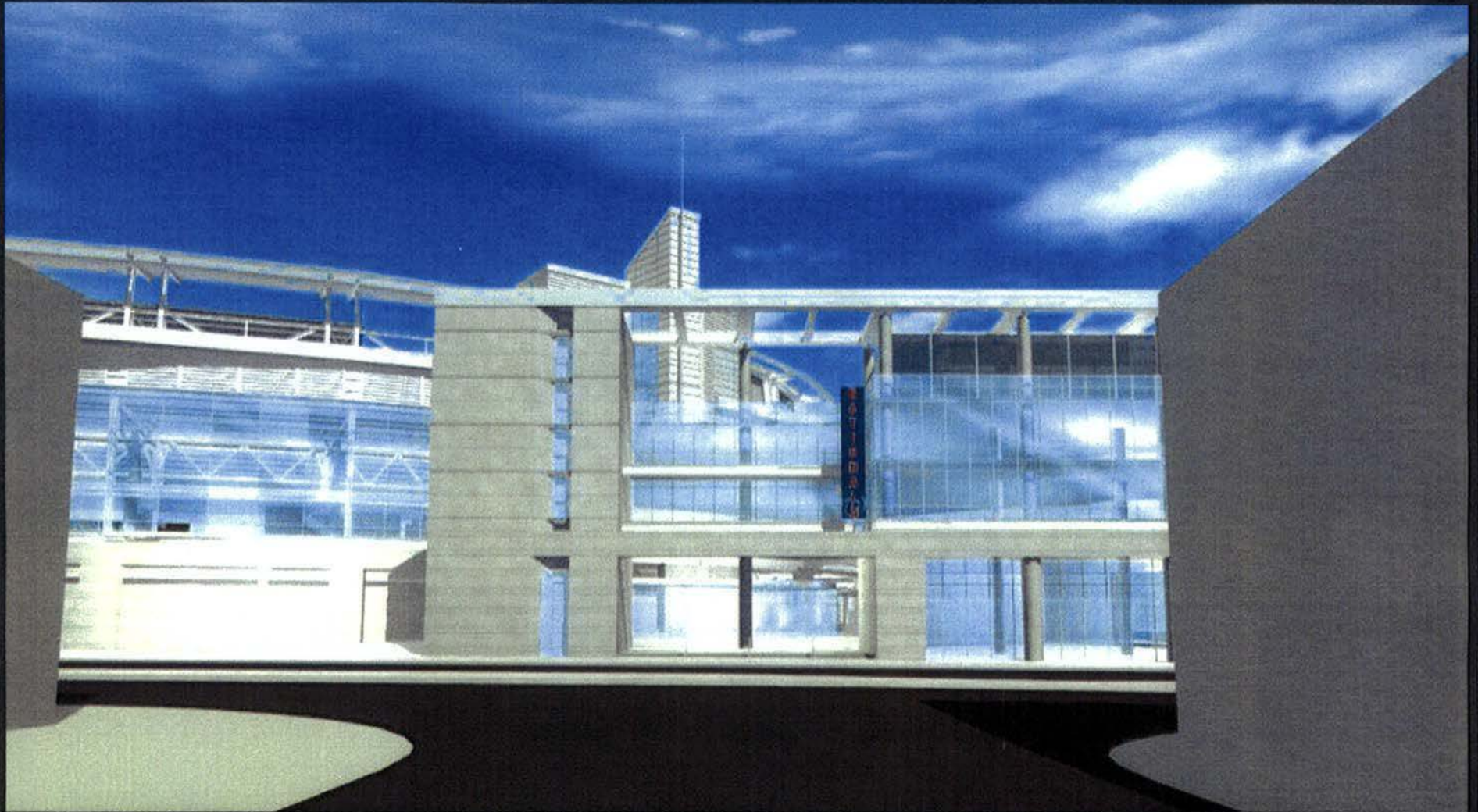
SOUTHWEST WATERCOLOR AERIAL
D.C. Major League Baseball Park





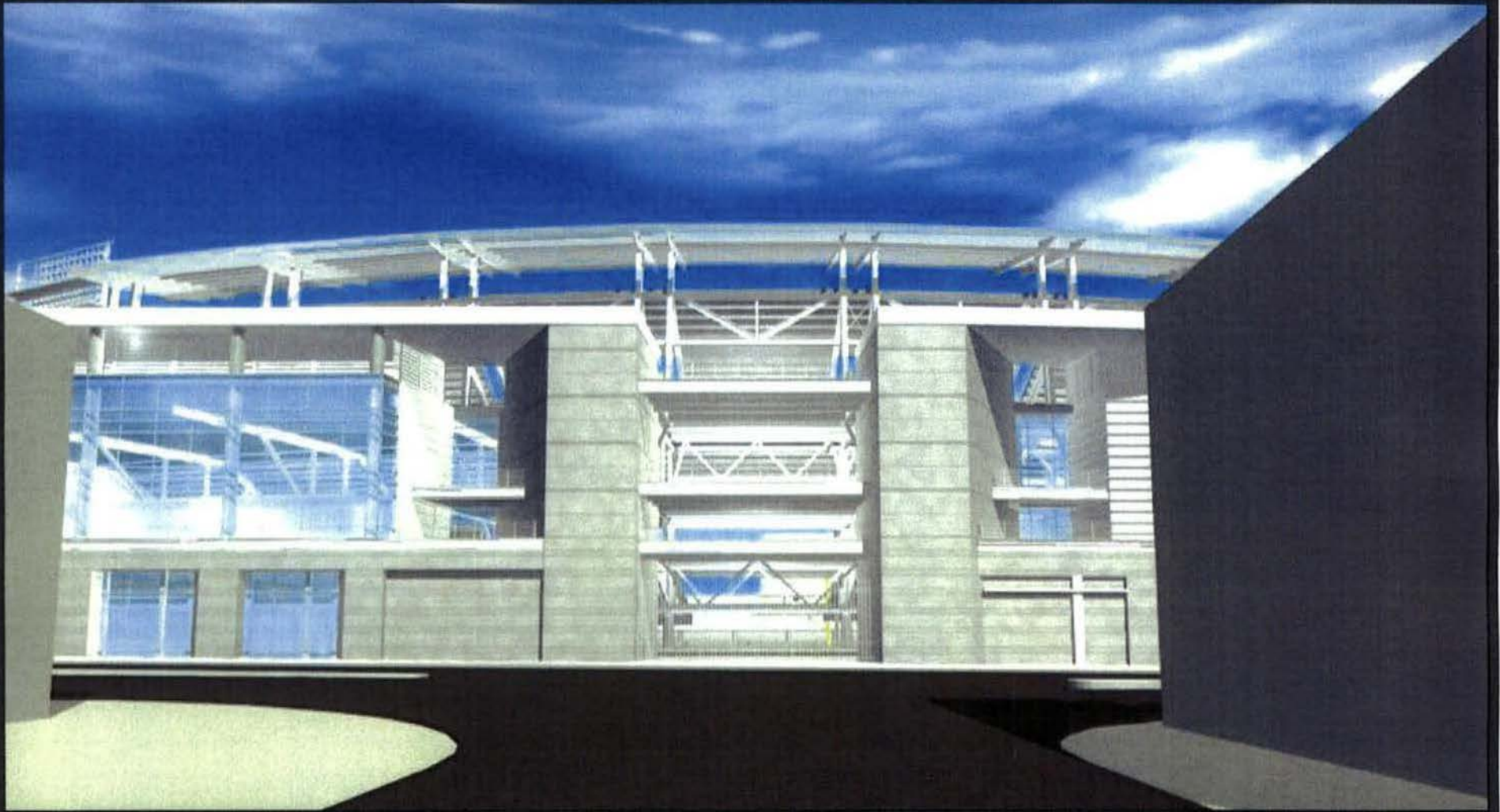
NORTHWEST WATERCOLOR AERIAL
D.C. Major League Baseball Park





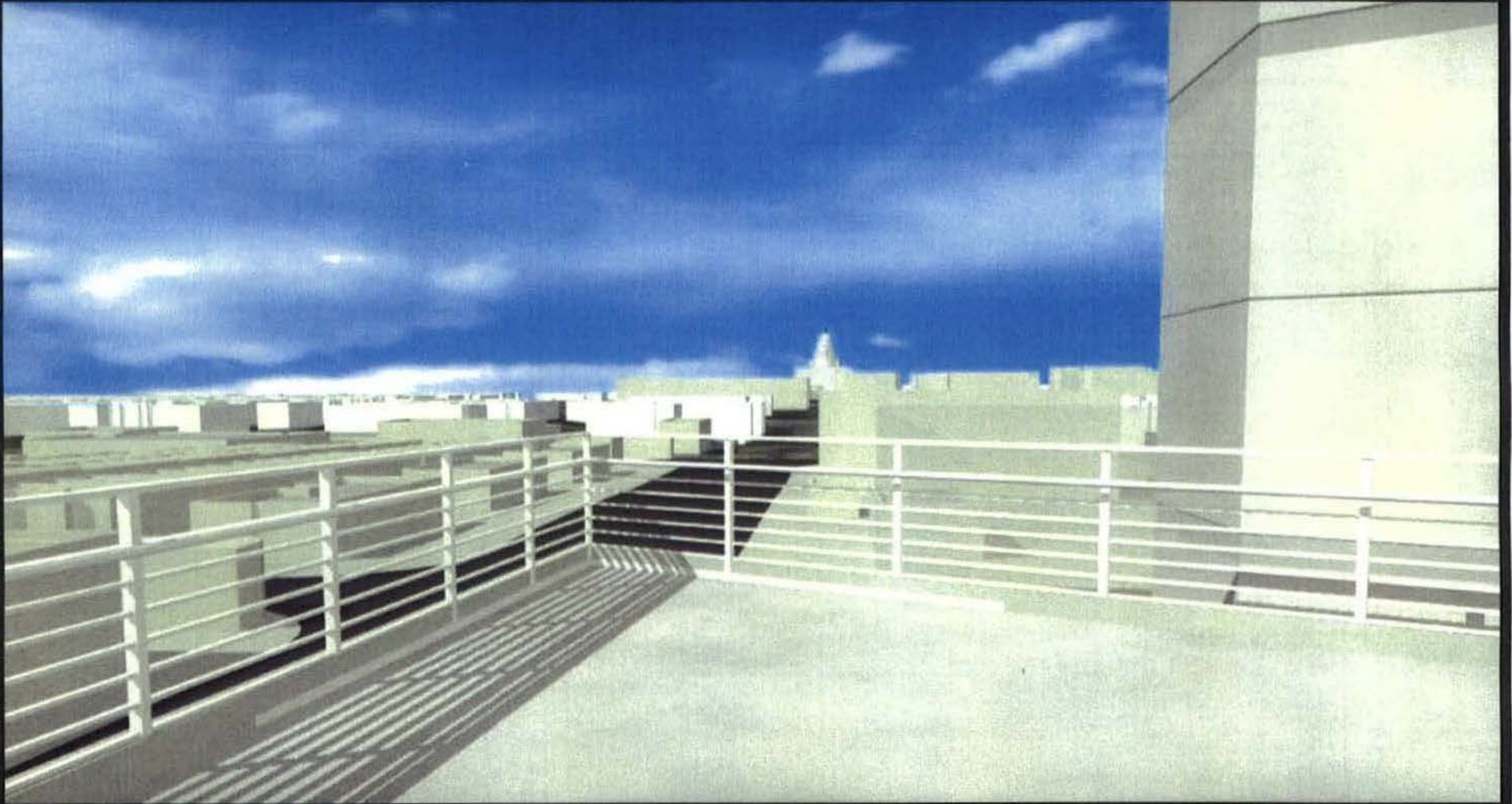
VIEW EAST FROM P STREET & SOUTH CAPITOL
D.C. Major League Baseball Park





VIEW EAST FROM O STREET & SOUTH CAPITOL
D.C. Major League Baseball Park





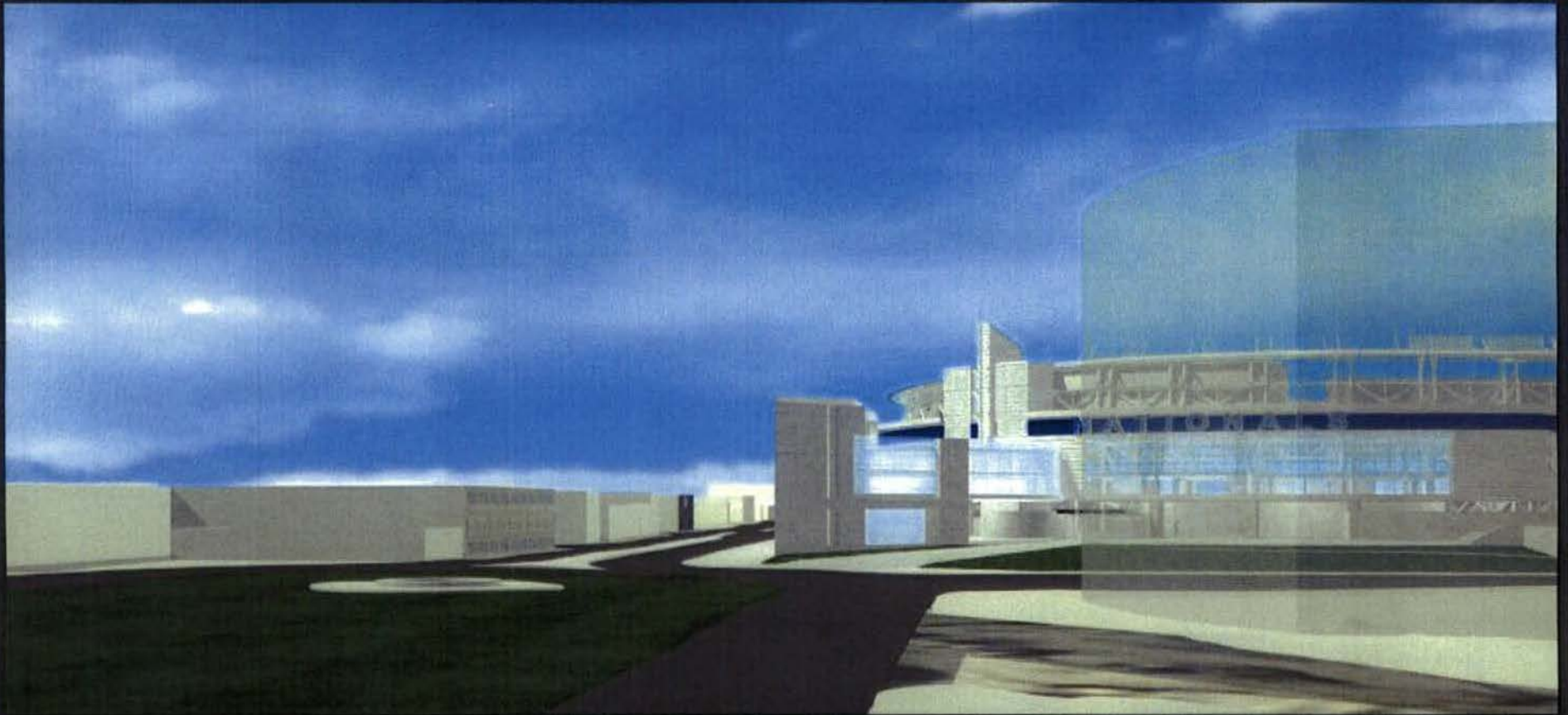
VIEW NORTH FROM SOUTH CAPITOL RAMP
D.C. Major League Baseball Park





AERIAL VIEW NORTH OVER PROPOSED OVAL
D.C. Major League Baseball Park





VIEW NORTH FROM PROPOSED OVAL
D.C. Major League Baseball Park





VIEW NORTH FROM S. CAPITOL & P STREET (TOWARD CAPITOL DOME)
D.C. Major League Baseball Park





VIEW FROM OVAL AT SOUTH ENTRY PLAZA
D.C. Major League Baseball Park





SITE PLAN RENDERING
D.C. Major League Baseball Park







SOUTHEAST WATERCOLOR AERIAL
D.C. Major League Baseball Park





VIEW FROM POTOMAC & FIRST – GRAND STAIR
D.C. Major League Baseball Park





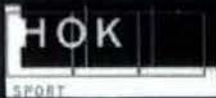
NORTHEAST WATERCOLOR AERIAL
D.C. Major League Baseball Park





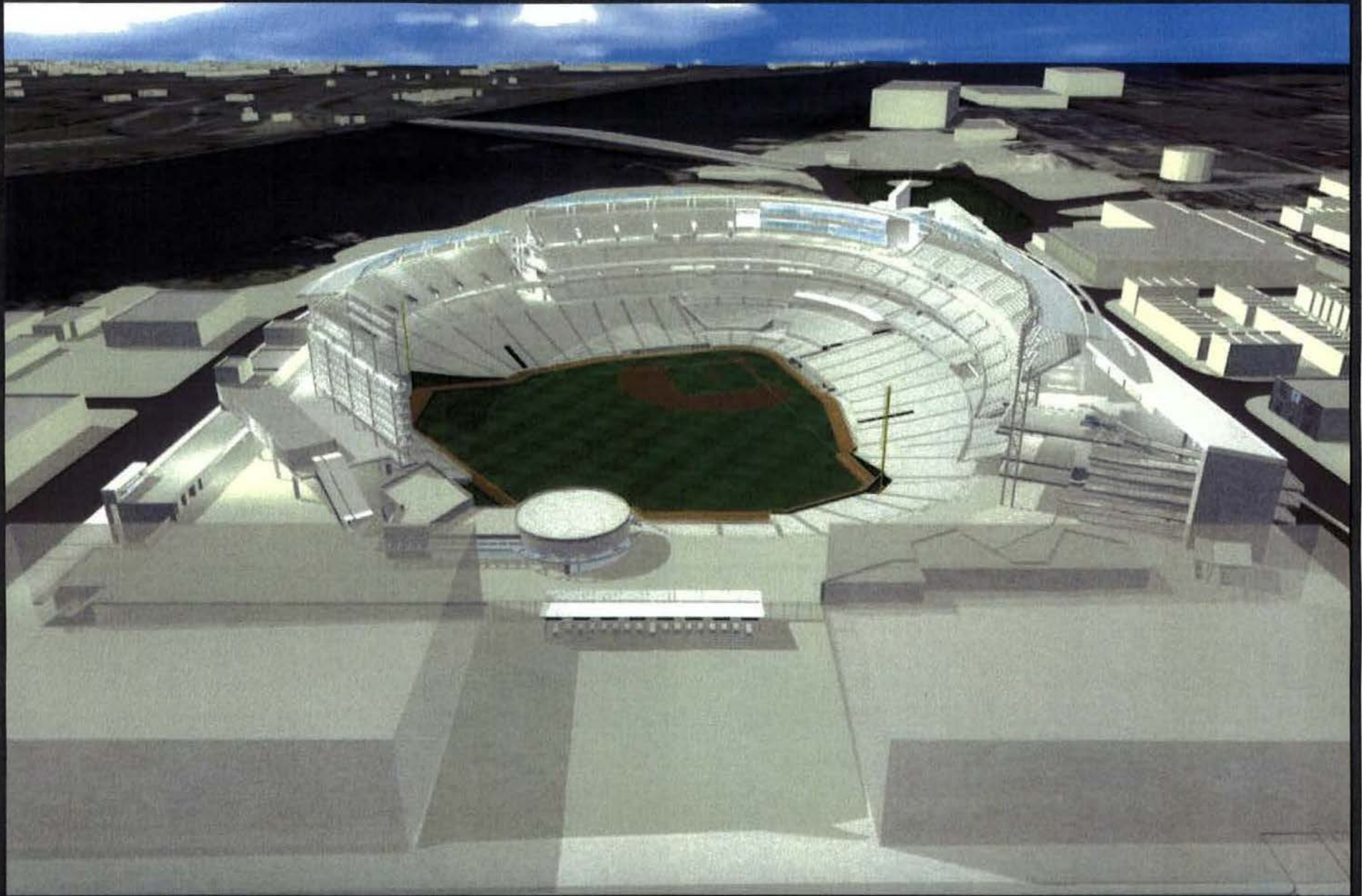
NORTHEAST WATERCOLOR AERIAL – OPTION 2
D.C. Major League Baseball Park





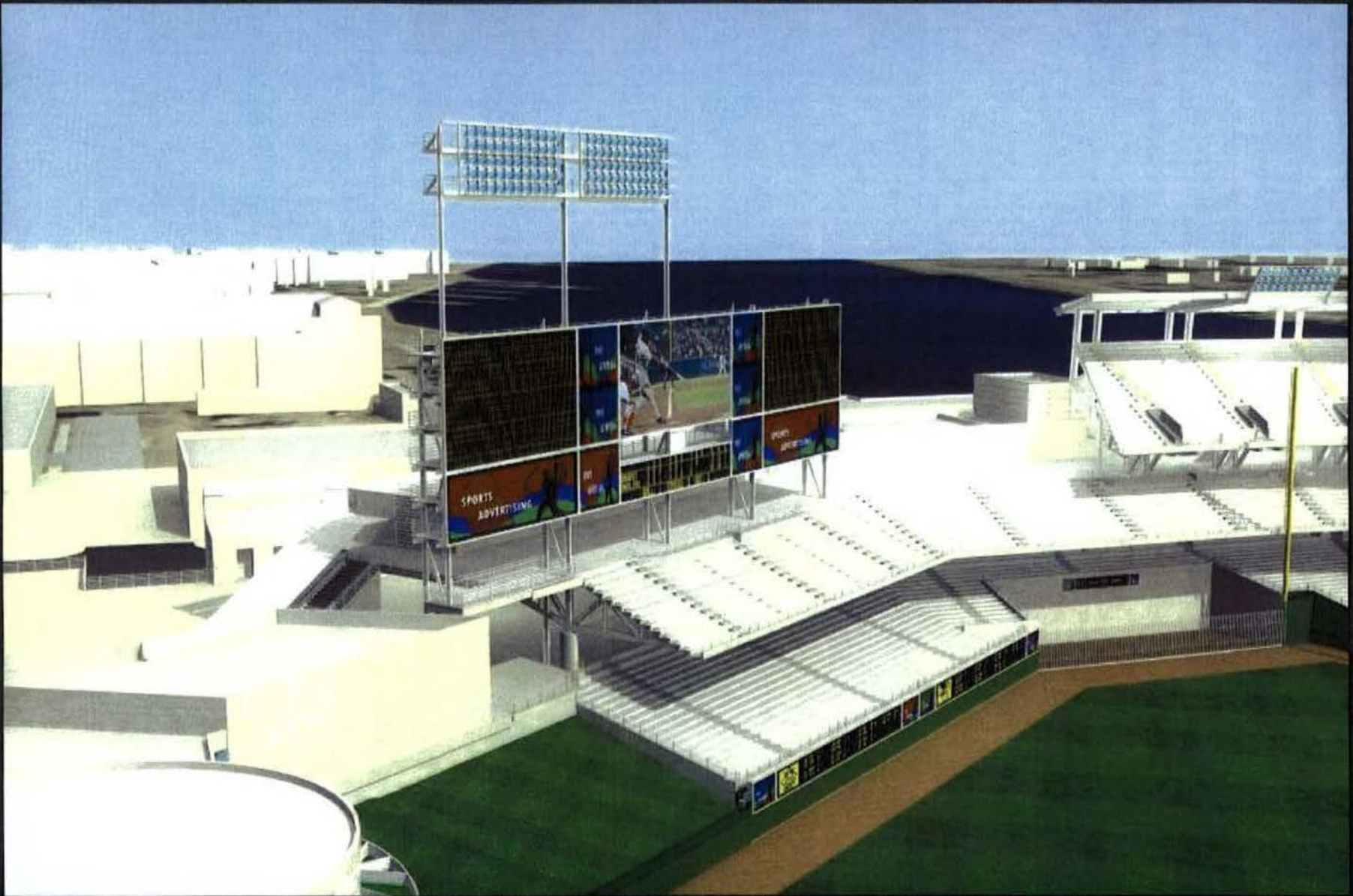
SCORE BOARD BACK FROM 1ST STREET
D.C. Major League Baseball Park

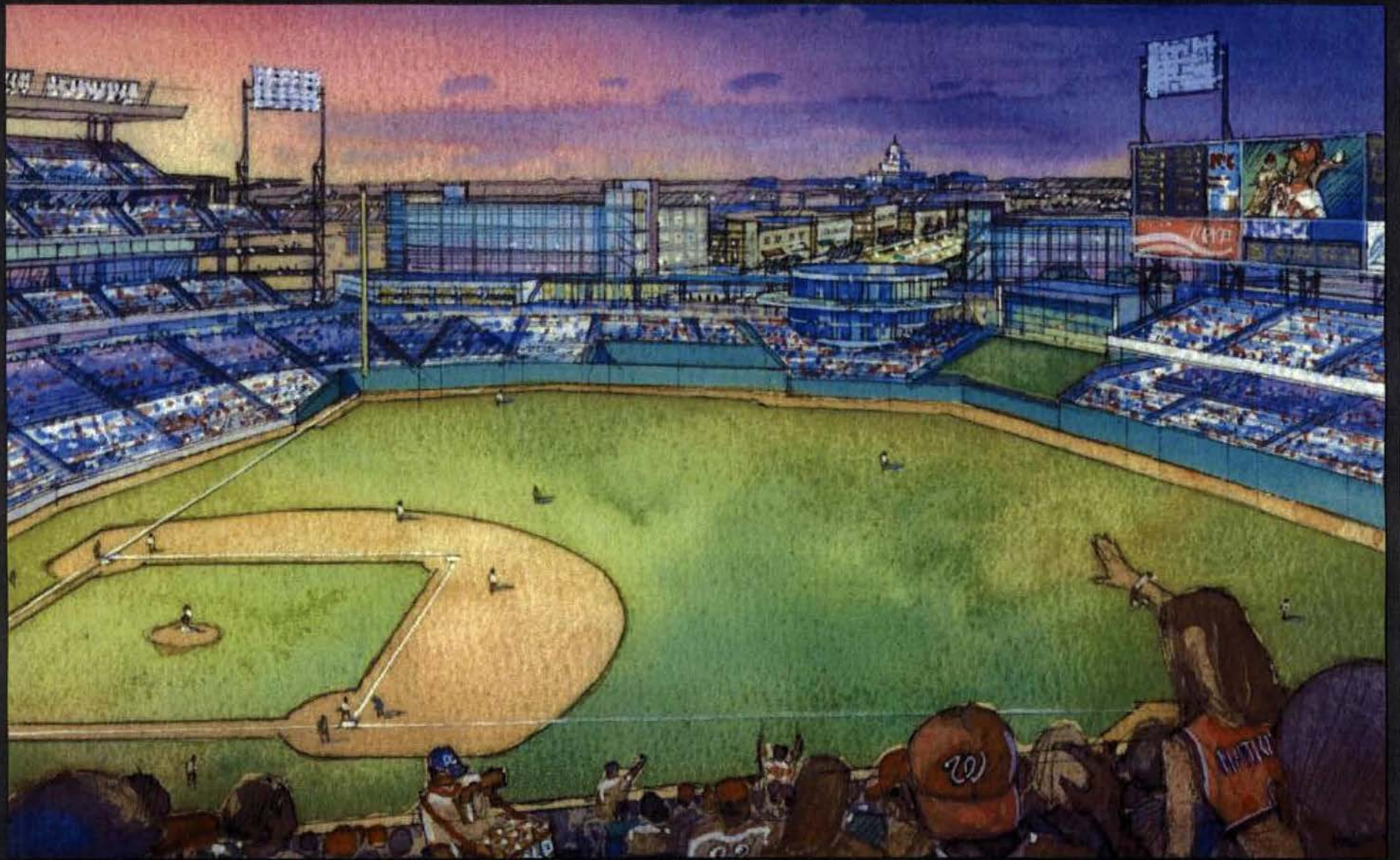




NORTH AERIAL VIEW – Looking south down Half Street
D.C. Major League Baseball Park







VIEW NORTH FROM UPPER CONCOURSE
D.C. Major League Baseball Park

